



**2022**

## **Information Pack**

**Contact Information:**

Facebook – [www.facebook.com/CSSTUDIOBEENLEIGH](https://www.facebook.com/CSSTUDIOBEENLEIGH)

Email – [csstudio@beenleightheatregroup.com](mailto:csstudio@beenleightheatregroup.com)

FAQs and 'How To Enroll' guide at end of information pack

## **Welcome!**

Now begins your journey with Crete Street Studio – formally known as JETS. 2022 is our third year of our new and redesigned youth program. We are looking forward to the benefits this program has for our students, whether it be assisting them at school, their future careers, or just exploring their hobbies and passions. We welcome you to the Crete Street family whether you are a returning student, or a fresh face.

This pack contains some handy information about the new program, including;

- Overview of Beenleigh Theatre Group and the Crete Street Studio program
  - Classes, Streams, Outcomes, Terms
- Communication
- Crete Street Studio and BTG values and expectations
- Expected showcases/performances
- Fees and Enrolment
- Support Information

As our new program begins to grow, we hope to provide you with all information needed to make your Studio experience memorable, enjoyable and educational.

We look forward to sharing in your success for 2022 and seeing all students push through theatrical boundaries at the Crete Street Theatre.

***Crete Street Studio Team and Beenleigh Theatre Group Committee***

## **Overview of Crete Street Theatre**

Crete Street Theatre, home of the Beenleigh Theatre Group is committed to all aspects of Community Theatre.

Our mission is:

*“Quality theatre for our community at affordable prices”*

Our core value is:

*“Giving Back”*

We believe everyone in our community should have access to the joy that is live theatre and that we can give back to our community through our relevant programs.

The theatre complex, corner of Kent and Crete Street, Beenleigh, contains a 150 seat auditorium accompanied by a large stage (suitable for all aspects of modern theatre), as well as large sized rehearsal space/green room, props and wardrobe and two large dressing rooms.

## **Overview of Crete Street Studio**

Crete Street Studio is about to operate its second year since rebranding and redesigning the previous 'JETS' program. JETS was successful and provided an amazing experience to the students who were lucky enough to be a part of it. However, in recent years, especially with the update of the Australian and Queensland school curriculums, the previous program lacked alignment with these curriculums. Also, another issue that had been noted a number of times was the age categories given to classes. In modern theatre, large age gaps within the same class present a number of challenges, including but not limited to; content that can be explored, behavior of students and overall 'outcomes' student actually achieve by the end of a year of study. It is for these reasons that the BTG Committee along with educational experts came to the consensus of updating and rebranding the system.

The program is now designed with student outcomes at the forefront while also aligning to the Australian Curriculum. Each class throughout the year will be striving to achieve these goals that both the students and their parents/guardians will be able to see. In 2020 we made some changes to the previous structure of learning and classes by creating 2 streams that students could enroll into; Speech & Drama and Acting. In 2021 we also added Musical Theatre and Technical Theatre into our program. Unfortunately, for 2022 we have had to remove Technical Theatre due to venue availability, however Musical Theatre, Acting, Speech & Drama and Collective all remain!

## **Summary of Streams**

### **Speech & Drama**

Students undertaking Speech and Drama will be learning the fundamentals of theatre performance. This class is targeted towards students who would be wanting to, or currently participate in eisteddfod type performance styles. This includes elements like Monologues, voice control and creative interpretation.

Speech and Drama classes provide content relevant to their age group. This content is also aligned to ACARA (Australian Curriculum), so when completing drama at school, they will be able to use these skills.

### **Acting**

Students undertaking acting will be learning the fundamentals of Acting. This class is targeted towards students who are wanting to start performing in theatre productions. This includes learning elements like, emotion, characterisation and performance.

Acting classes provide content relevant to their age group. This content is also aligned to ACARA (Australian Curriculum), so when completing drama at school, they will be able to use these skills.

Students are expected to participate in showcases. Extra classes may be scheduled to assist.

### **Musical Theatre**

Students undertaking the Musical Theatre classes will be learning the fundamentals of MT performance including Voice, Acting and Dance.

These classes will be targeted towards the specific age groups and general class experience.

MT classes will also have very specific expectations of students. These will include specific behavioural and effort expectations, as well as performance expectations. For example; Students joining this class are here to learn and perform MT. They are expected to actively participate in ALL class activities, as well as frequent class showcases.

### **JETS**

JETS, is a combination of Speech and Drama, Musical Theatre and Acting, however for our youngest students. This class combines these separate elements of performance to allow younger students to build the basic fundamental skills of performance, so when they are older, they have a better conception of different performance aspects.

### **Crete Street Collective**

CS Collective is a weekly group for those individuals who want to continue their theatre learning experience, as well as be involved in socially accepting environment. Collective sessions run completely differently to other CSS classes in the way that they don't have 'specific' outcomes addressed and set like the junior classes do. This group exists as a creative space for those who want to be a part of it. The idea behind the sessions is that CS Collective will run, how those who join it want it to run. This meaning, say it's agreed that

they will explore the concept of realism on stage, then that's what the group will focus on until everyone is happy with the outcome.

Crete Street Studio is divided as follows;

- JETS Aged 5 - 9
- Speech & Drama Aged 10 - 14, 15 - 18
- Acting Aged 10 – 12, 13-15, 15 - 18
- Musical Theatre Aged 10 - 14, 15 - 18
- CS Collective Aged 18+

Class Times and Days:

Studio classes operate on weekly intervals, please find below the current proposed timetable.

### Timetable 2022

Monday	Tuesday	Wednesday	Thursday
<i>Mikeal</i>	<i>Matthew</i>	<i>Ren</i>	<i>Ren</i>
<b>MT 1</b> Age 10-14 GREEN ROOM 4pm – 5.30pm	<b>S&amp;D 2</b> Age 15-18 GREEN ROOM 4pm – 5.30pm	<b>ACT 1A</b> Age 10-12 GREEN ROOM 4pm – 5pm	<b>JETS 1</b> Age 5-9 GREEN ROOM 5pm – 6pm
<b>MT 2</b> Age 15-18 GREENROOM 5.30pm – 7pm	<b>ACT 2</b> Age 15-18 GREENROOM 5.30pm – 7pm	<b>SD 1</b> Age 10-14 GREEN ROOM 5pm – 6pm	
	<b>CS COLLECTIVE</b> 18+ FOYER 7pm – 8pm	<b>ACT 1</b> Age 12-14 GREEN ROOM 6pm – 7pm	

*Please note, all classes times and dates are subject to change/cancellations depending on enrolments. You will be notified via email and the CS Studio Facebook page of ANY changes.*

*Ages are not 'concrete' for class participation, in fact, we may ask for you/your student to move up or down classes.*

Crete Street Studio Terms coincide with QLD school terms (2022)\*

- **Term 1** January 31<sup>st</sup> – 1<sup>st</sup> April
- **Term 2** 19<sup>th</sup> April – 24<sup>th</sup> June
- **Term 3** 11<sup>th</sup> July – 17<sup>th</sup> September
- **Term 4** 3<sup>rd</sup> October – 9<sup>th</sup> December

Please note, classes **do not** start in week 1 of term 1. There is an information and enrolment evening on **Thursday January 20<sup>th</sup> 2022** and classes will **begin January 31<sup>st</sup>**. Most CSS classes will still run if their class falls on a public holiday.

**Dates listed above are CSS class dates – NOT QLD school dates.**

Parents/guardians are welcome to sit in on classes for the first two weeks, however, after this point it will be a closed rehearsal room. If there are any issues, please contact the Crete Street Team directly via the CSS Facebook Page, or email.

### **Communication**

Communication to parents/guardians from either the tutors or the committee will take place via email and Facebook. Both the emails and Facebook page are regularly monitored by several people, however if you are not answered, please resend your message or speak to a committee member/tutor directly.

Any negative/harassing comments or criticism of any kind will not be tolerated. Engaging in this may result in your student being removed from the program.

The Crete Street Studio Management team is open to any feedback about our new programs. Please feel free to contact us via [csstudio@beenleightheatregroup.com](mailto:csstudio@beenleightheatregroup.com)

### **Crete Street Studio Showcases and Performances**

Each year the studio students are encouraged and supported to strut their stuff on the main stage. Each stream is given the opportunity to provide a showcase at least twice a year, along with support in entering eisteddfods and other such similar competitions.

A change from the previous JETS program is that the new program will focus on providing/using/creating ensemble and individual performance pieces, meaning that all students in their respective production have ample and even time to showcase what they have learnt throughout the year. These productions may require extra rehearsal times outside of the allocated class slots. Students are required to attend unless discussed prior. The below dates are locked in. Please ensure students are available for these days.

#### **Mid Year Showcase - July 15 & 16<sup>th</sup> (Term 3 Week 1)**

The Mid Year Showcase is designed for students to perform the specific skills they have been learning in Terms 1 and 2. For Musical Theatre these will be performances of 1 – 2 songs as individuals/pairs. For Acting and Speech & Drama these will be Monologues or Duologue type pieces.

#### **End of Year Showcase - December 9<sup>th</sup> & 10<sup>th</sup> (Term 4 Week 10)**

The End of Year showcases are designed as larger performance pieces. Students from each day will combine classes and create a performance piece that is similar to something that might be seen in a One Act Play. This performance will be very similar to a normal mainstage performance. Students will audition, rehearse and perform. These performances will require extra rehearsals leading up to the shows.

## Crete Street Studio Fee Schedule

	<b>1 TERM</b>	<b>1 SEMESTER</b>	<b>1 YEAR</b>
<b>1 Stream</b>	\$100	\$175	\$300
<b>2 Streams</b>	\$150	\$300	\$450
<b>3 Streams</b>	\$200	\$450	\$600
<b>OPENS</b>	\$50	\$100	\$200

### Example Students:

- 1) *Johnny, a 12-year-old who loves acting. He would like to try it out for 1 term. He pays 1 STREAM – 1 TERM for \$100 and selects ACTING 1 when enrolling*
- 2) *Jane, a 14-year-old, who has been doing Drama for a couple of years, and is not interested in Musical Theatre however wants to continue doing Acting and Speech & Drama, however may be moving interstate in August. She pays 2 STREAMS – 1 SEMESTER for \$300 and selects S&D 1 and ACTING 2 when enrolling*
- 3) *Phoebe, a 16 year old, is an experienced CSS member and wants to participate in all 3 class types. She knows she is available all year on the above days listed in the timetable. She pays 3 STREAMS – 1 YEAR, and selects MT2, S&D 2 and ACT 3 when enrolling.*

## Payment Options

Payment for 2022 is ONLY available online, this will also be where you place you/your students details in. You can find the online link at our website - [www.beenleightheatregroup.com/jets](http://www.beenleightheatregroup.com/jets)

Fees are due by week 2 of each term (or the end of the student's trial period).

If you have any payment issues, please contact the Crete Street Studio team via the Crete Street Studio Facebook Page or via email at [csstudio@beenleightheatregroup.com](mailto:csstudio@beenleightheatregroup.com)

## **Crete Street Studio's Values and Expectations**

Crete Street Theatre and its reputation relies completely on those who represent it. It is due to this that certain expectations are placed upon all members to maintain and uphold the good name of the theatre.

- Promptness and timeliness
- Organisation and preparation
- Courteous and respectful to students, parents, volunteers and tutors
- Creative and adventurous in theatrical exploits
- Clear and open communicant in all operations.

At Crete Street Studio we understand that teaching our youth how to behave in a theatre environment and to work collaboratively is important. We appreciate any support from the youth students' parents/guardians in achieving these objectives. We understand, giving the update of our youth program, that there may be some 'teething' issues and the B.T.G. committee will appreciate any feedback/concerns from our students or their parents/guardians.

### **1. BE A PERFORMER**

The primary aim of our youth program is to facilitate and promote students growth as a performer. This happens when you;

- Give your individual best effort to classes and activities
- Contribute positively to classes and activities

### **2. BE SAFE**

Crete Street Studio thrives on providing a diverse and inclusive environment. In order to do this, we place a high value on the physical and emotional safety of all our students. Theatres can potentially be dangerous places. We can ensure safety when you;

- Respect the personal space and property of others.
- Do not touch props and equipment that are not in use by your Studio class.
- Follow theatre etiquette and protocols at ALL TIMES.
- Move safely around the theatre – especially on and around the stage.
- Solve problems and conflicts without violence of ANY type.
- Use equipment with supervision or instruction of an authorised person.

### **3. BE RESPECTFUL**

At the Crete Street Studio we expect each and every student to treat others with respect and courtesy at all times. We act and communicate in a manner that reflects the awareness of the rights of others. You are being respectful when you;

- Act and speak in a way that shows you care about the rights, emotions and ideas of others.
- Treat other people's property with care.



- Listen attentively to your fellow students, your tutors and B.T.G Committee members.
- Learn and follow the theatre protocols/etiquette consistently.
- Choose to work in positive ways with other theatre group members.

#### **4. BE RESPONSIBLE**

Crete Street Studio values the importance of learning to self-manage, being able to make appropriate behavioural choices and accept responsibility for the choices that are made.

You are being responsible when you;

- Make an effort to be organised – be punctual to classes, learn lines and choreography, bring props and costumes when asked.
- Follow directions from Tutors and ALL responsible adults of the BTG Membership.
- Accept that you are responsible for the choices you make and the consequences for those choices.
- Are committed to improving your ability to make good choices.

#### **5. BE COOPERATIVE**

Drama is a group activity which fails totally if one member is not cooperating, cooperation is ESSENTIAL to participate in the Crete Street Studio program. You are being cooperative when you;

- Show concern for others.
- Act and speak in a way that demonstrates good manners towards others (Tutors, Students, Parents and other B.T.G Members).
- Listen attentively when others are speaking.
- Resolve problems and conflict without verbal and physical aggression.
- Choose to work with others in respectful and positive ways.

**Thank You!**

We hope you find this pack informative and useful during your time with the Crete Street Studio.

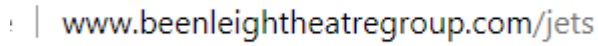
***Crete Street Studio Management Team & B.T.G Committee***

## Frequently Asked Questions

1. Can I trial a class before committing to pay?
  - a. Yes! We usually allow a 2 week trial period before we start requesting payment be made.
2. Can I join a class at any time?
  - a. Yes! Classes can be joined at anytime, however, we don't recommend joining close to a showcase as classes will generally be preparing for that.
3. How do I enroll?
  - a. You can enroll by following the link on our website – [www.beenleightheatregroup.com/jets](http://www.beenleightheatregroup.com/jets) which will take you to our Trybooking. A 'How To' guide for navigating enrolment is located below.
4. What is the best way to contact tutors?
  - a. Messaging our Facebook page is the quickest way to contact a tutor, unless they have specifically arranged something different. Otherwise, sending us an email will also work as this will be forwarded to the tutor for a reply.
5. What/where is the 'Greenroom'?
  - a. The 'Greenroom' is just like a dressing room in a theatre, however it is usually where rehearsals and other similar activities take place. At Crete Street Theatre, the Greenroom is accessed through the complex carpark. As you come down into the carpark, you'll see the **Red Door** next to the air-conditioning units on your left.
6. How do I pay?
  - a. Payment is made when you officially enroll into Crete Street Studio. This is **ONLINE ONLY**. Make sure you select the correct Streams and term options for what you want to enroll into. (If you do make a mistake, we will happily refund, however this does take a couple of days)
7. Refunds?
  - a. Crete Street Studio does issue refunds on a **case-by-case** basis. Please contact us via email or Facebook if a refund is requested.
8. Who runs CSS?
  - a. Crete Street Studio is run by a team of **VOLUNTEERS** who are part of the Beenleigh Theatre Group Committee. These people are;
    - i. Chris Art – Registered Teacher | Theatre Nerd
    - ii. Bradley Chapman – Registered Teacher | Performer/Director/Creator
    - iii. Trinetta Avery– Theatre Professional | Performer/Creator
9. When are classes?
  - a. Classes are held Mondays - Thursdays from 4pm. A specific timetable is provided above.

# How To Enroll

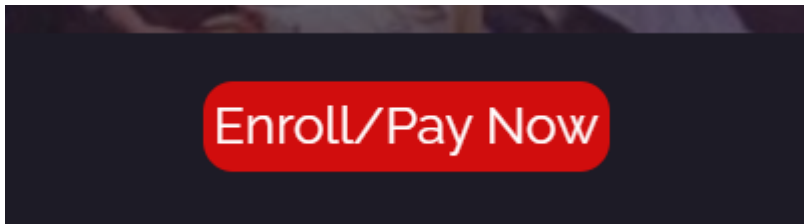
## 1. Navigate to website - [www.beenleightheatregroup.com/jets](http://www.beenleightheatregroup.com/jets)



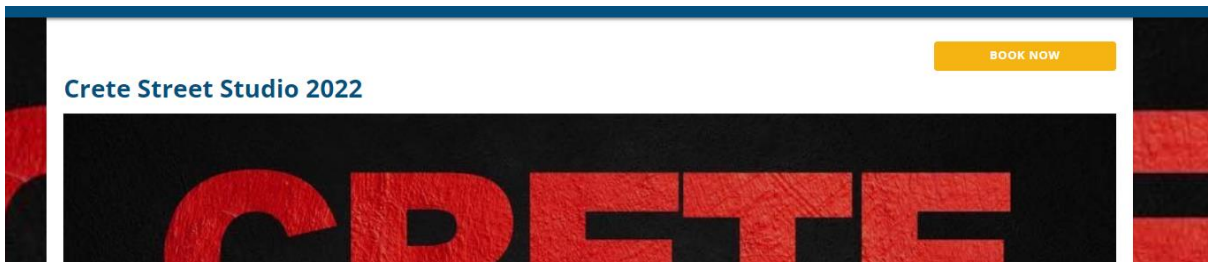
www.beenleightheatregroup.com/jets

## 2. Select 'Enroll/Pay Now'

This will open a 'Trybooking' page



## 3. Select 'Book Now'



## 4. Select how many streams and how long you're enrolling/paying for then click 'next'

Ignore the Tuesday 12 January date as this is ONLY for Trybooking purposes and does not reflect what you are purchasing.

In the below example, 1 Stream for 1 Year is selected.

# Crete Street Studio 2021

TUESDAY 12 JANUARY 2021

## Tickets

TYPE	DESCRIPTION	PRICE	QUANTITY
1 Stream 1 Term		\$100.00	- 0 +
2 Streams 1 Term		\$150.00	- 0 +
3 Streams 1 Term		\$175.00	- 0 +
1 Stream 1 Semester		\$175.00	- 0 +
2 Streams 1 Semester		\$300.00	- 0 +
3 Streams 1 Semester		\$350.00	- 0 +
1 Stream 1 Year		\$300.00	- 1 +
2 Streams 1 Year		\$450.00	- 0 +
3 Streams 1 Year		\$600.00	- 0 +
Technical 1 Term		\$50.00	- 0 +
Technical 1 Semester		\$100.00	- 0 +
Technical 1 Year		\$200.00	- 0 +

1 ticket selected

BACK

NEXT

## 5. Fill out student information

If you select more than 1 ticket on the previous page, you will have to fill out the below for each 'ticket'. This option works for if you are enrolling multiple students at once.

**Please ensure ALL information is correct as this is what we will use to contact you.**

### Crete Street Studio 2022

#### Ticket Holder Information

1. 1 STREAM 1 SEMESTER - CRETE STREET STUDIO 2022 - SECTION 1

Student First Name \*

Student Last Name \*

Student Preferred Name

Student School Name (If Applicable)

## 6. Select Classes and fill out special information, the click 'next'

This is on the same page as step 5. Please ensure you have looked at the timetable before selecting classes. Class names are listed on the timetable to ensure you select the correct one. Only select classes you are paying for. For example, if you have selected 2 streams, you should be selecting 2 classes.

Class Selection \* Class Selection is required.

Musical Theatre 1

Musical Theatre 2

Speech and Drama 2

Acting 2

Crete Street Collective

Speech and Drama 1

Acting 1

## 7. Fill out payment details and click 'purchase'

Please use the STUDENT NAME in the booking details name section. This makes it easier for us to locate your booking if required. You will then see a booking confirmation page. Your 'ticket' information will also be emailed to you. You should then receive an email from us in a couple of days confirming your enrollment and class selection.

### Checkout

How would you like to pay?

CARD  PayPal +0.5% for PayPal

#### Booking details

FIRST NAME\*  LAST NAME\*   
First name is required. Last name is required.

COUNTRY\*  PHONE NUMBER\*    
Phone number is required.

ADDRESS\*   
Address is required.

SUBURB\*  POSTCODE\*   
Suburb is required. Postcode is required.

EMAIL ADDRESS\*  CONFIRM EMAIL ADDRESS\*   
Email address is required. Email address is required.

#### Card details

CARD NUMBER \*

🛒 Your cart

**Crete Street Studio 2022** ^

Ticket: 1 Stream 1 Semester  
Qty: 1  
When: Crete Street Studio 2022 Section 1  
Price: \$175.00 (+\$0.50 ticket fee)  
**Subtotal: \$175.50** ✕ Remove

GIFT CERTIFICATE / PROMOTION CODE  
 APPLY

Tickets x 1	\$175.00
Ticket Fee	\$0.50

[Buy more tickets](#) [Find other events](#)  
[Buy gift certificates](#)

**TOTAL: \$ 175.50**

